

Over 50% of the world's people  
live in urban environments. Because of  
this density, cities can play a large role  
in the global impact of climate change.  
City actions could hold the key to  
slowing down climate change.

# Climate, Communities, Koshland

Jeanne Braha, Koshland Science Museum  
January 30, 2013

RESHAPING  
OUR CITY  
AND OUR PLANET

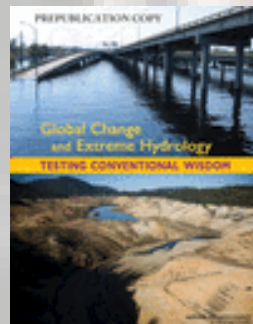
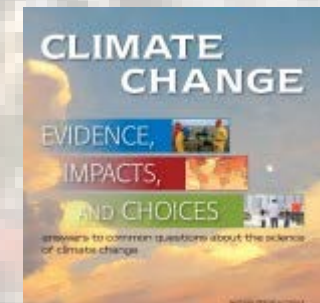
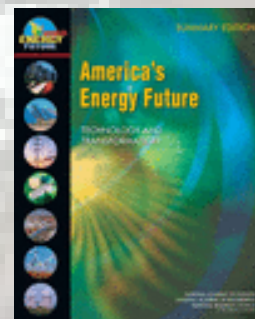
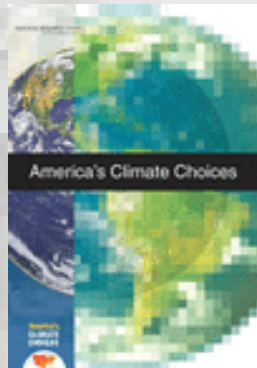


NATIONAL ACADEMY OF SCIENCES

1863–2013 • Celebrating 150 Years of Service to the Nation

KOSHLAND  
SCIENCE  
MUSEUM  
[koshland-dc.org](http://koshland-dc.org)

# To help people use science to solve problems



**KOSH LAND  
SCIENCE  
MUSEUM**  
[koshland-dc.org](http://koshland-dc.org)



**NATIONAL ACADEMY OF SCIENCES**  
1863–2013 • Celebrating 150 Years of Service to the Nation



# Climate Change Education in the Museum (and online)

**“Climate change... poses serious, wide-ranging threats to human societies and natural ecosystems around the world. While many uncertainties remain regarding the exact nature and severity of future impacts, the need for action seems clear.”**

**-National Research Council**

**KOSHLAND  
SCIENCE  
MUSEUM**  
**koshland-dc.org**

## Earth Lab

### DEGREES OF CHANGE

Earth is warming. Heat waves have become longer and more extreme. Cold snaps have become shorter and milder. Northern Hemisphere snow cover has decreased. Rivers and lakes are freezing later and thawing earlier. Arctic sea ice has declined. Glaciers and ice caps are melting in many parts of the world.

Why is this happening?  
What impacts will it have?  
What can we do about it?



1.8°F

1.6°F

1.4°F

1.2°F

1°F

0.8°F

0.6°F

0.4°F

0.2°F

0°F

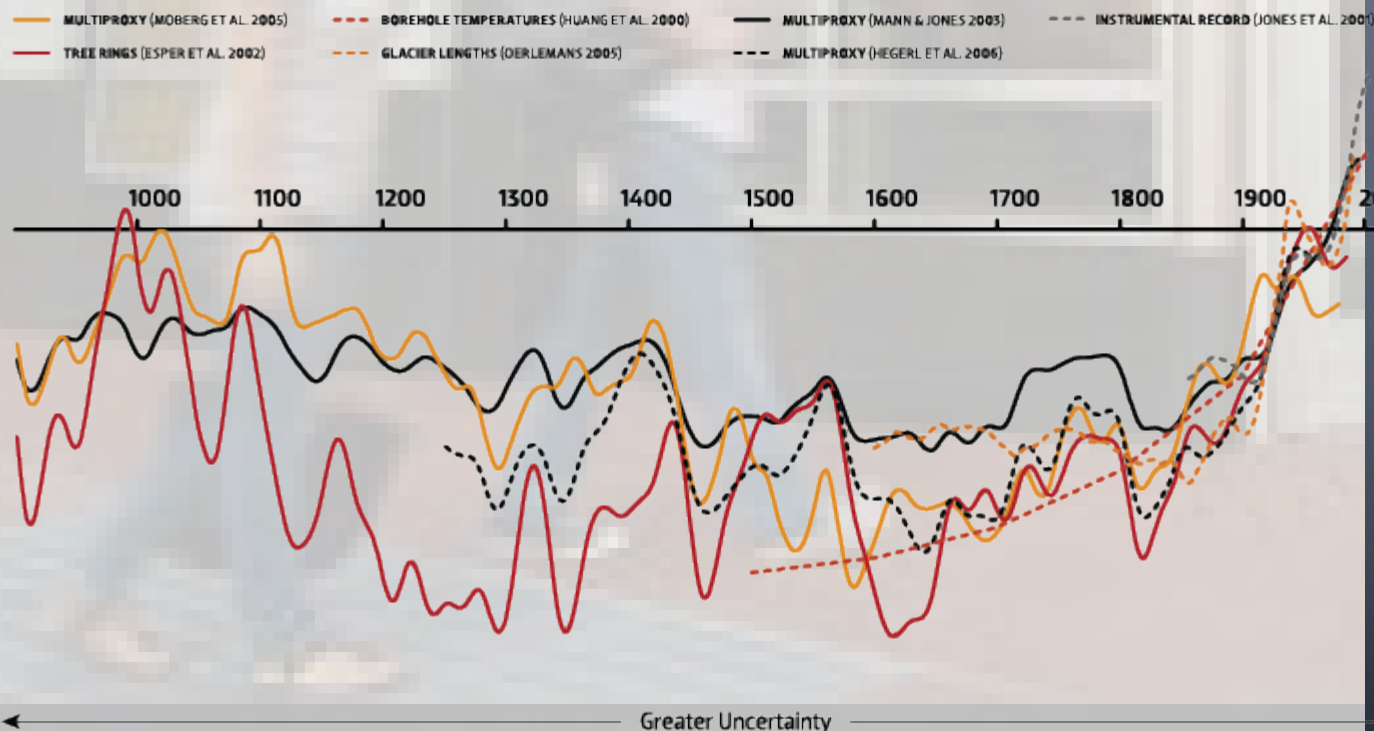


# What is the Greenhouse Effect?



## How Do Climate Models Work?

### Temperature Anomalies









# Climate and Urban Systems Partnership

world's people  
ents. Because of  
play a large role  
of climate change.  
city actions could hold the key to  
ing down c

Working together towards public engagement that is:

- Targeted
- Coordinated
- Concentrated

RESHAPING  
OUR CITY  
AND OUR PLANET

**KOSHLAND  
SCIENCE  
MUSEUM**  
**koshland-dc.org**

The Franklin Institute  
Carnegie Museum of Natural History  
The New York Hall of Science  
**Marian Koshland Science Museum**  
UPCLOSE  
Center for Climate Systems Research



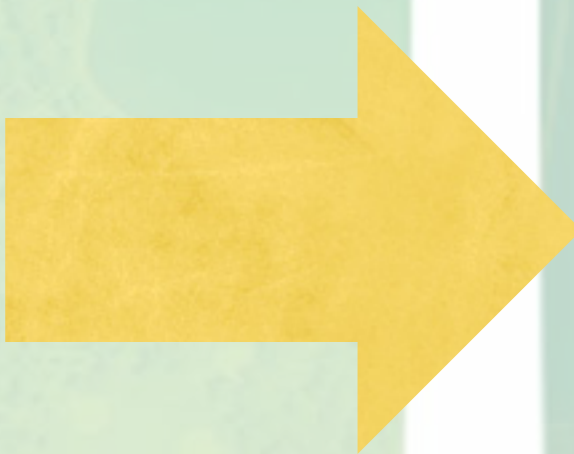
This material is based upon work  
supported by the National Science  
Foundation under Grant No. 1239782







# Goals and Vision





# Goals and Vision: Success!

Over 50% of the world's people  
live in urban environments. Because of



Image by David Gaines



Image by Heather Farrell

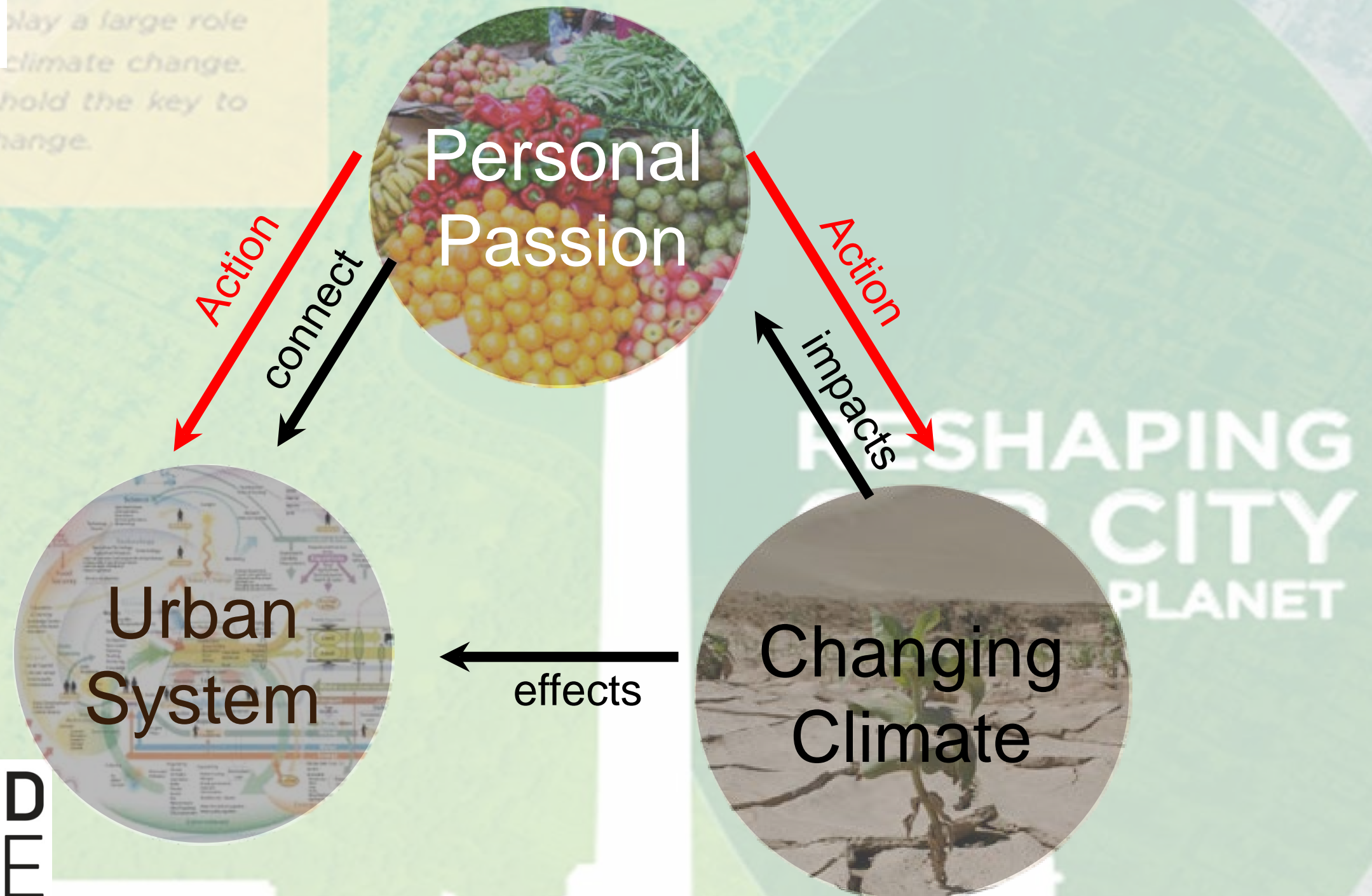


## RESHAPING OUR CITY





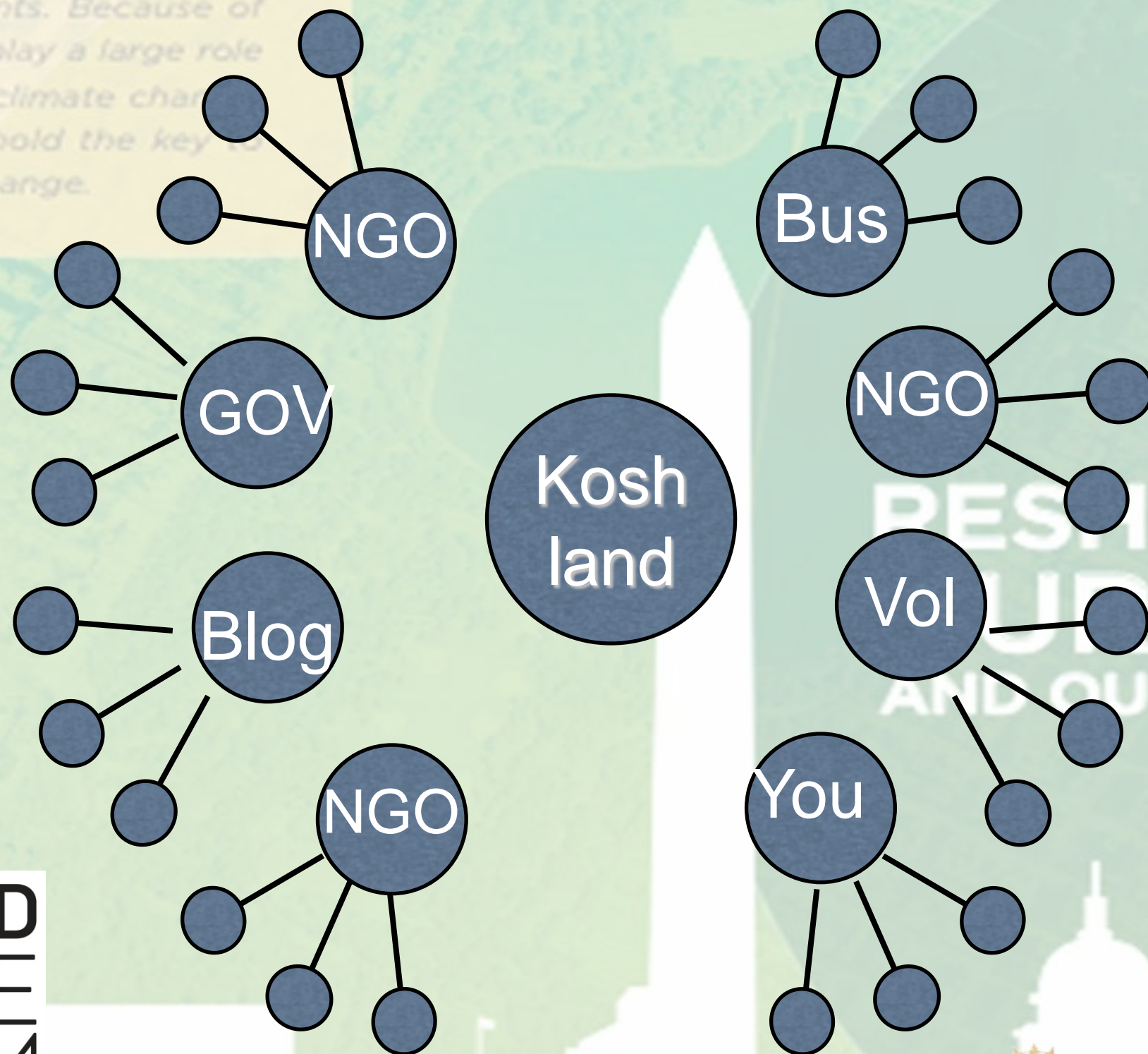
# Goals and Vision: Project Theory







# Washington, D.C. City Partnership Structure







world's people  
nts. Because of  
play a large role  
climate change

city actions could  
ing down climate ch

## National Capital Region Climate Change Report

Prepared by the Climate Change Steering Committee for the  
Metropolitan Washington Council of Governments Board of Directors

Adopted November 12, 2008



KOSHLAND  
SCIENCE  
MUSEUM  
[koshland-dc.org](http://koshland-dc.org)



# RESHAPING OUR CITY AND OUR PLANET



This material is based upon work  
supported by the National Science  
Foundation under Grant No. 1239782





world's people  
nts. Because of  
play a large role  
climate change.

city actions could hold the key to  
ring down climate change.

Jeanne Braha  
jbraha@nas.edu

RESHAPING  
OUR CITY  
AND OUR PLANET

KOSH LAND  
SCIENCE  
MUSEUM  
koshland-dc.org



This material is based upon work  
supported by the National Science  
Foundation under Grant No. 1239782